

Tip A ring masuraları
Type A tube without bull - nose

- Geniş renk seçimi
Large variety of colours.

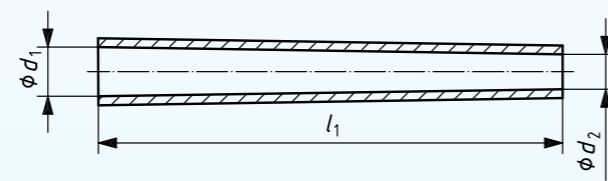


- Metal yüzüklü veya yüzüksüz büküm masuraları
For whoolen, Semi-worsted, worsted, carpet yarn spinning tubes with or without metal ring

1:38

Ölçüler mm'dir.

Uzunluk Lengths l_1	Tolerans Permissible deviation	Grup/Row							
		0		1		2		3	
		d_1	d_2	d_1	d_2	d_1	d_2	d_1	d_2
1:38 açılı masura $d_3 = d_2 + 0,26$									
180	± 1,5	20,24	15,50	18,74	14,00	17,24	12,50		
190		20,24	15,24	18,74	13,74	17,24	12,24		
200		22,26	17,00	20,26	15,00	18,76	13,50		
210		22,27	16,74	20,27	14,74	18,77	13,24		
220		24,28	18,49	22,28	16,49	20,28	14,49	18,78	12,99
230	24,30	18,25	22,3	16,25	20,30	14,25	18,8	12,75	
240	± 2	27,31	20,99	24,31	17,99	22,31	15,99	20,31	13,99
250		27,32	20,74	24,32	17,74	22,32	15,74	20,32	13,74
260		30,34	23,50	27,34	20,50	24,34	17,50	22,34	15,50
270		30,35	23,24	27,35	20,24	24,35	17,24	22,35	15,24
280		33,36	25,99	30,36	22,99	27,36	19,99	24,36	16,99
290		33,37	25,74	30,37	22,74	27,37	19,74	24,27	16,64
300		± 2,5	36,39	28,50	33,39	25,50	30,39	22,50	27,39

Her iplik üretimine uygun yüzey tasarını
Surface design for all type of yarn productionOtomatik doffing sistemi için PBT burç
Suitable for automatic dopping equipment with sliding made of PBTTip B ring masuraları
Type B tube with bull - nose

- ISO 368 standartlarına uygun üretilmiş 1:38 – 1:40 – 1:64 açılı ring masuraları
Manufactured according DIN ISO 368 Taper 1:38 – 1:40 – 1:64 spinning tubes

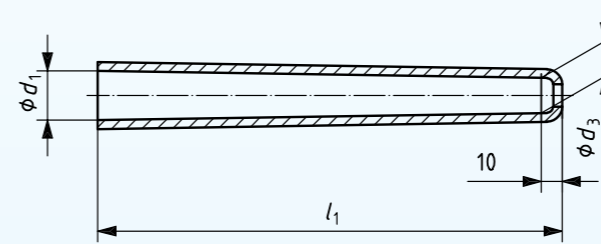
- Yüksek devirlerde balanssız, darbe mukavemeti yüksek masura kalitesi,
High quality levels in concentricity, run out stability and durability at high speeds,
- Geniş renk seçimi
Large variety of colours.
- İstenilen adetlerde hızlı üretim
Fast production at the requested quantities.

Hammaddeler / Materials: Polycarbonate –ABS-PBT-PC & PA 66 with glass compounds

1:64

Ölçüler mm'dir.

Uzunluk Lengths l_1	Tolerans Permissible deviation	Grup/Row							
		0		1		2		3	
		d_1	d_2	d_1	d_2	d_1	d_2	d_1	d_2
1:64 açılı masura $d_3 = d_2 + 0,16$									
180	± 1,5	19	16,19	17	14,19	15	12,19		
190		20	17,03	18	15,03	16	13,03		
200		21	17,88	19	15,88	17	13,88	15	11,88
210		22	18,72	20	16,72	18	14,72	16	12,72
220		24	20,56	22	18,56	20	16,56	18	14,56
230	24	20,41	22	18,41	20	16,41	18	14,41	
240	± 2	27	23,25	24	20,25	22	18,25	20	16,25
250		27	23,09	24	20,09	22	18,09	20	16,09
260		30	25,94	27	22,94	24	19,94	22	17,94
270		30	25,78	27	22,78	24	19,78	22	17,78
280		33	28,63	30	25,63	27	22,63	24	19,63
290		33	28,47	30	25,47	27	22,47	24	19,47
300		± 2,5	36	31,31	33	28,31	30	25,31	27





En iyi performans için yüzey seçenekleri
Surface features for best performance based on requirement.



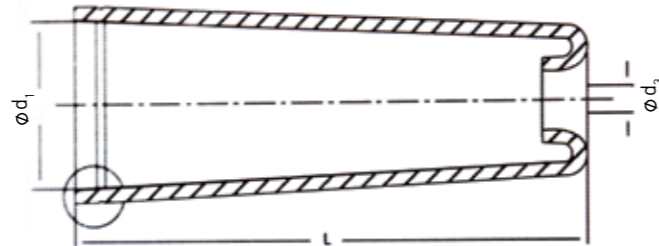
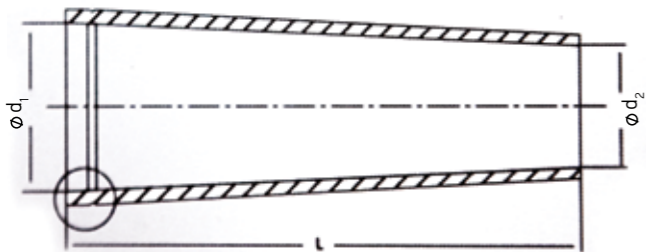
Açık veya kapalı uçlu konik seçenekleri.
With bull-nose or without bull-nose on top.



İstenilen renk, desen,
yazı veya baskı imkanı.
Opportunity of requested
colour, figure or logo.

Ölçüler mm'dir

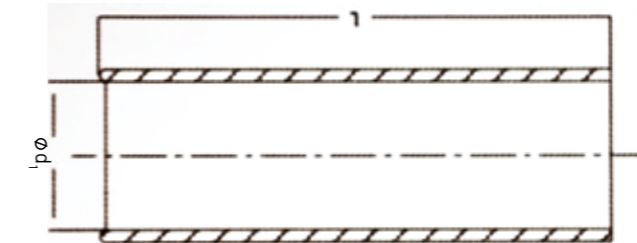
4° 20' Konik Bobinler 4° 20' Cones						5° 57' Konik Bobinler 5° 57' Cones						3° 30' Konik Bobinler 3° 30' Cones					
L	Tolerance	d 1	d 2	d 3	Tolerance	L	Tolerance	d 1	d 2	d 3	Tolerance	L	Tolerance	d 1	d 2	d 3	Tolerance
145	±0.5	55	33	28	± 0.25	170	±0.5	68	33	28	± 0.25	230	±1.00	62	34	24	± 0.25
170	±0.5	59	33	28	±0.25	230	±1.00	80	33	-	±0.25	290	±1.00	62	24.5	17	±0.25
200	±1.00	80	49.5	40	±0.25	290	±1.00	104	43.5	-	±0.25	175	±0.5	71.5	50	40	±0.25
230	±1.00	80	45	34	±0.25							230	±1.00	71.5	43.5	33	±0.25



Manuel veya otomatik doffing proseslerinde kullanılmak üzere pamuk,
yün veya sentetik elyaf ip çeşitlerine uygun silindirik bobinler.
Suitable for manuel or automatic process with cotton, wool, wool blends and synthetic fiber yarns.



Güçlendirilmiş Open-End bobinleri
Reinforced Open-End bobbins



Ölçüler mm'dir

d 1	Tolerance	L	Tolerance
37	±0.2	170	±0.5
43	±0.2	165	±0.5
43	±0.2	170	±0.5
43	±0.2	175	±0.5
43	±0.2	195	±0.5
43	±0.2	230	±0.5
54	±0.2	145	±0.5
54	±0.2	170	±0.5
56	±0.2	145	±0.5
56	±0.2	170	±0.5
73	±0.2	230	±0.5
73	±0.2	290	±0.5